

## POWER FLOW OPERATION

---

B3E051701030T07

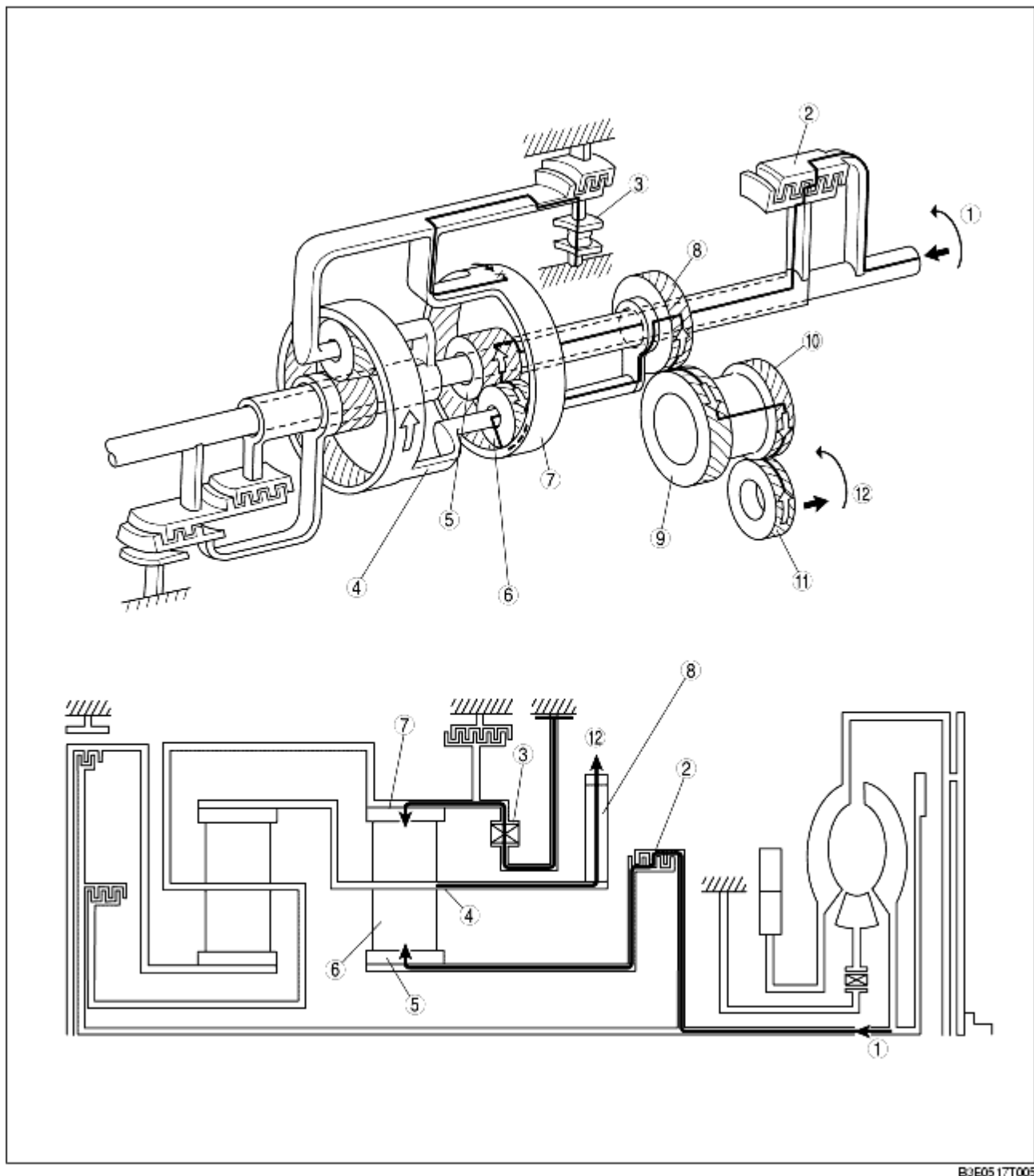
### Component description

Component	Function
Forward clutch	<ul style="list-style-type: none"><li>• Transmits the input torque from the turbine shaft to the front sun gear.</li><li>• Operates in the forward range of the first, second, or third gear position.</li></ul>
3-4 clutch	<ul style="list-style-type: none"><li>• Transmits the input torque from the turbine shaft to the rear planetary carrier.</li><li>• Operates in the forward range of the third or fourth gear position.</li></ul>
Reverse clutch	<ul style="list-style-type: none"><li>• Transmits the input torque from the turbine shaft to the rear sun gear.</li><li>• Operates when the vehicle is backing up.</li></ul>
2-4 brake band	<ul style="list-style-type: none"><li>• Locks rotation of the reverse drum and fixes the rear sun gear.</li><li>• Operates in the second or fourth gear position.</li></ul>
Low and reverse brake	<ul style="list-style-type: none"><li>• Fixes the rotation of the front internal gear.</li><li>• Operates when the vehicle is backing up or in the first gear position (M range 1GR).</li></ul>
One-way clutch	<ul style="list-style-type: none"><li>• Locks the counterclockwise rotation of the front internal gear in the first gear position.</li></ul>
Planetary gear	<ul style="list-style-type: none"><li>• The planetary gear functions as a transmission due to the engagement/ disengagement of clutches and/or brakes, converts the transmitted driving force of the turbine shaft and transmits it to the output gear.</li></ul>

### Note

- All directions of rotation are viewed from the torque converter.

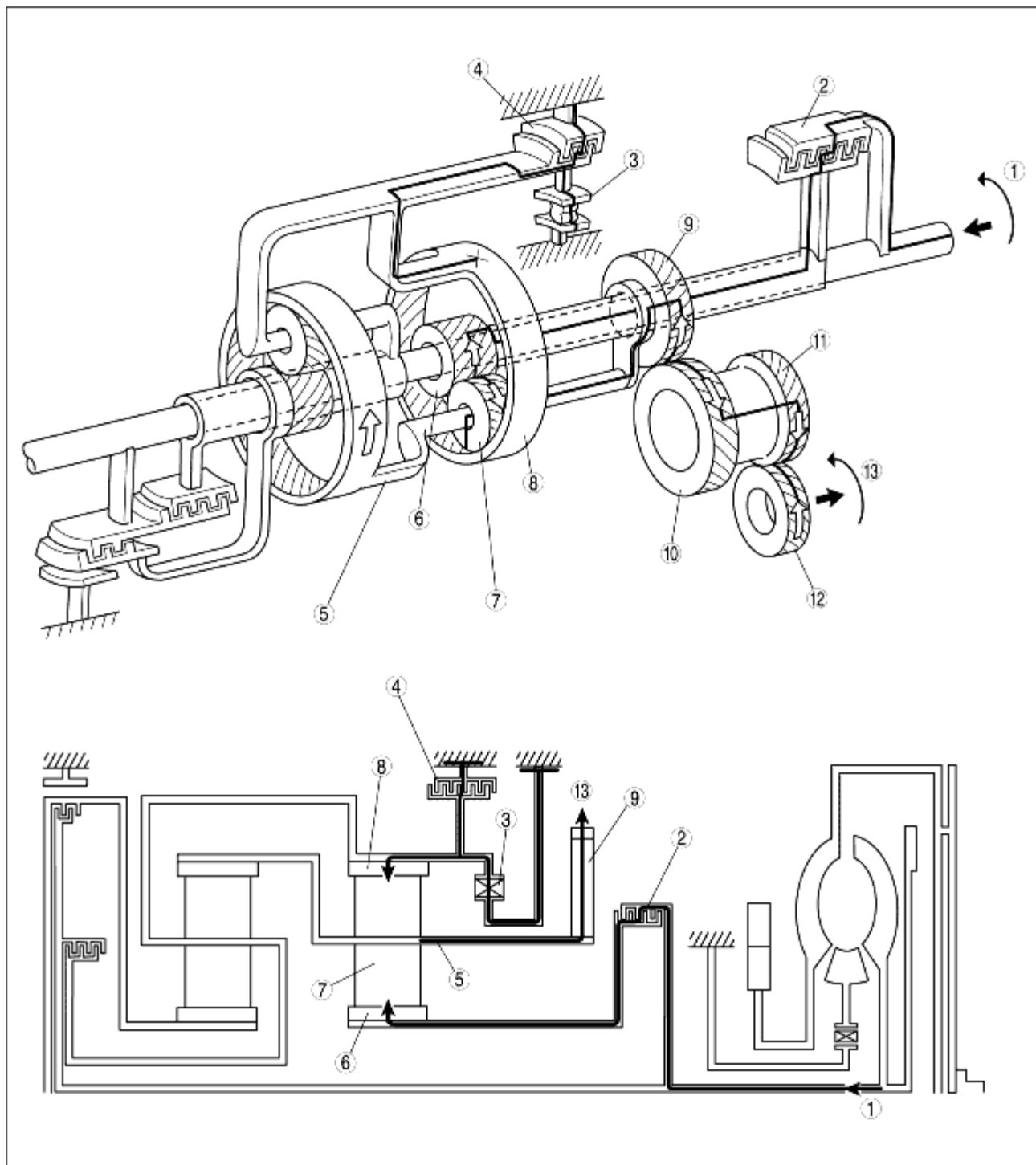
### 1GR (D range)



B3E05 17T005

1	Input
2	Forward clutch
3	One-way clutch
4	Front planetary carrier
5	Front sun gear
6	Front pinion gear
7	Front internal gear
8	Primary gear

9	Secondary gear
10	Output gear
11	Ring gear (Differential)
12	Output

**1GR (M range)**

B3E05 17T006

1	Input
---	-------

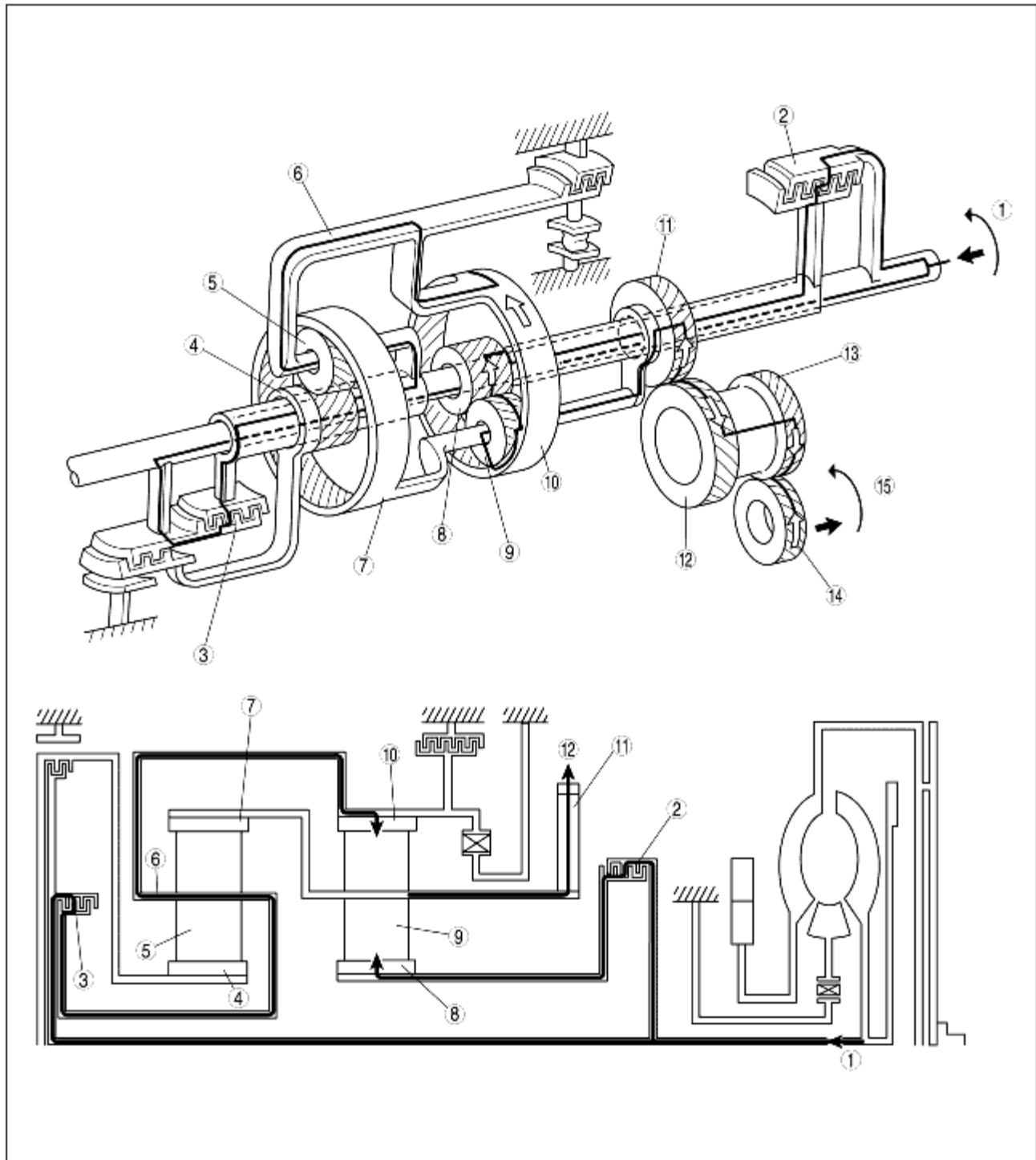
2	Forward clutch
3	One-way clutch
4	Low and reverse brake
5	Front planetary carrier
6	Front sun gear
7	Front pinion gear
8	Front internal gear
9	Primary gear
10	Secondary gear
11	Output gear
12	Ring gear (Differential)
13	Output

**2GR**



file:///R:/My%20Websites/Files/001%20NEW/Mazda%203%20BK/srvcl/html/B3E05... 15/02/2019

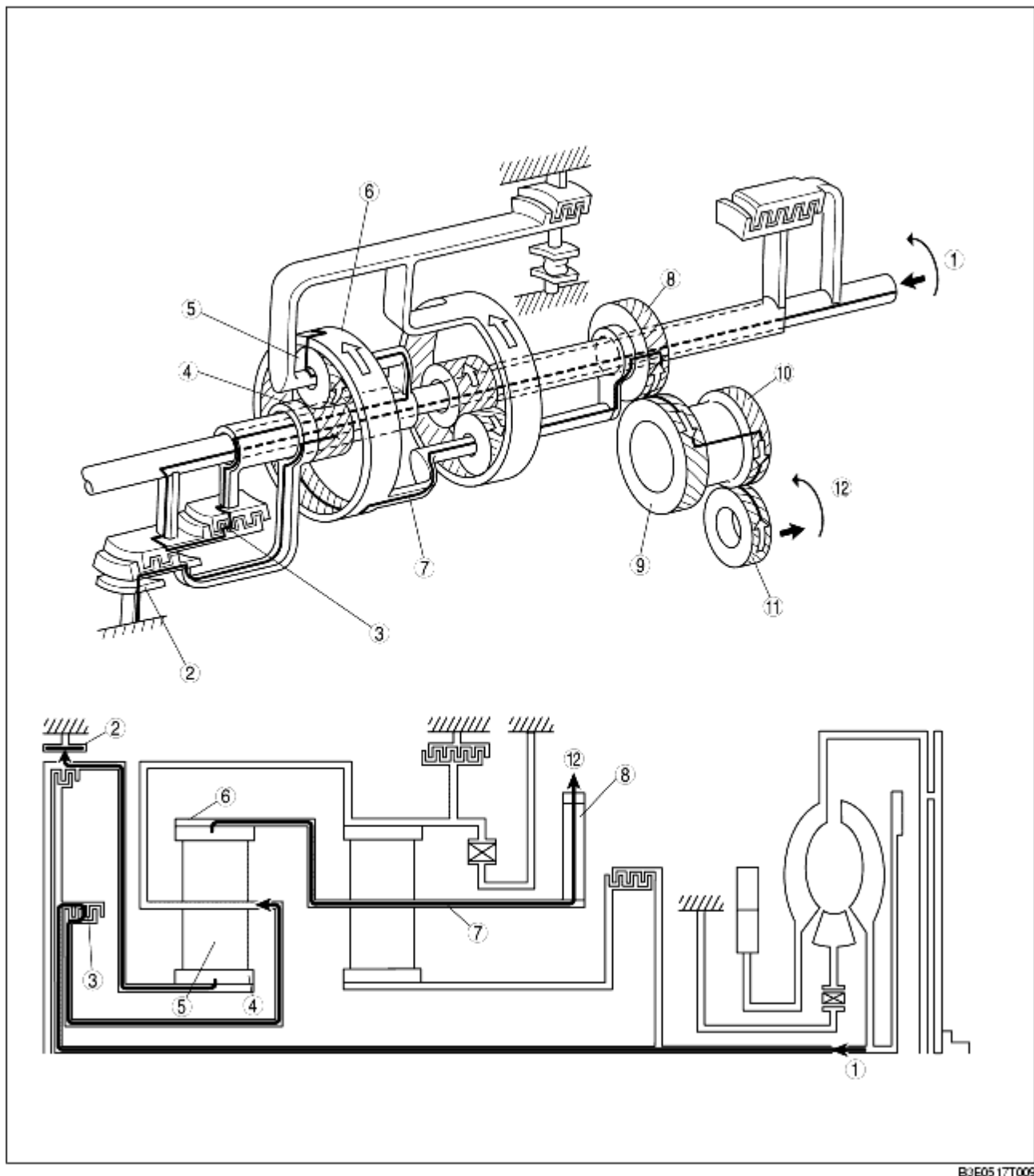
9	Front sun gear
10	Front pinion gear
11	Front internal gear
12	Primary gear
13	Secondary gear
14	Output gear
15	Ring gear (Differential)
16	Output

**3GR**

B3E05 17T008

1	Input
2	Forward clutch
3	3-4 clutch
4	Rear sun gear
5	Rear pinion gear
6	Rear planetary carrier
7	Rear internal gear
8	Front sun gear
9	Front pinion gear
10	Front internal gear
11	Primary gear
12	Secondary gear
13	Output gear
14	Ring gear (Differential)
15	Output

**4GR**

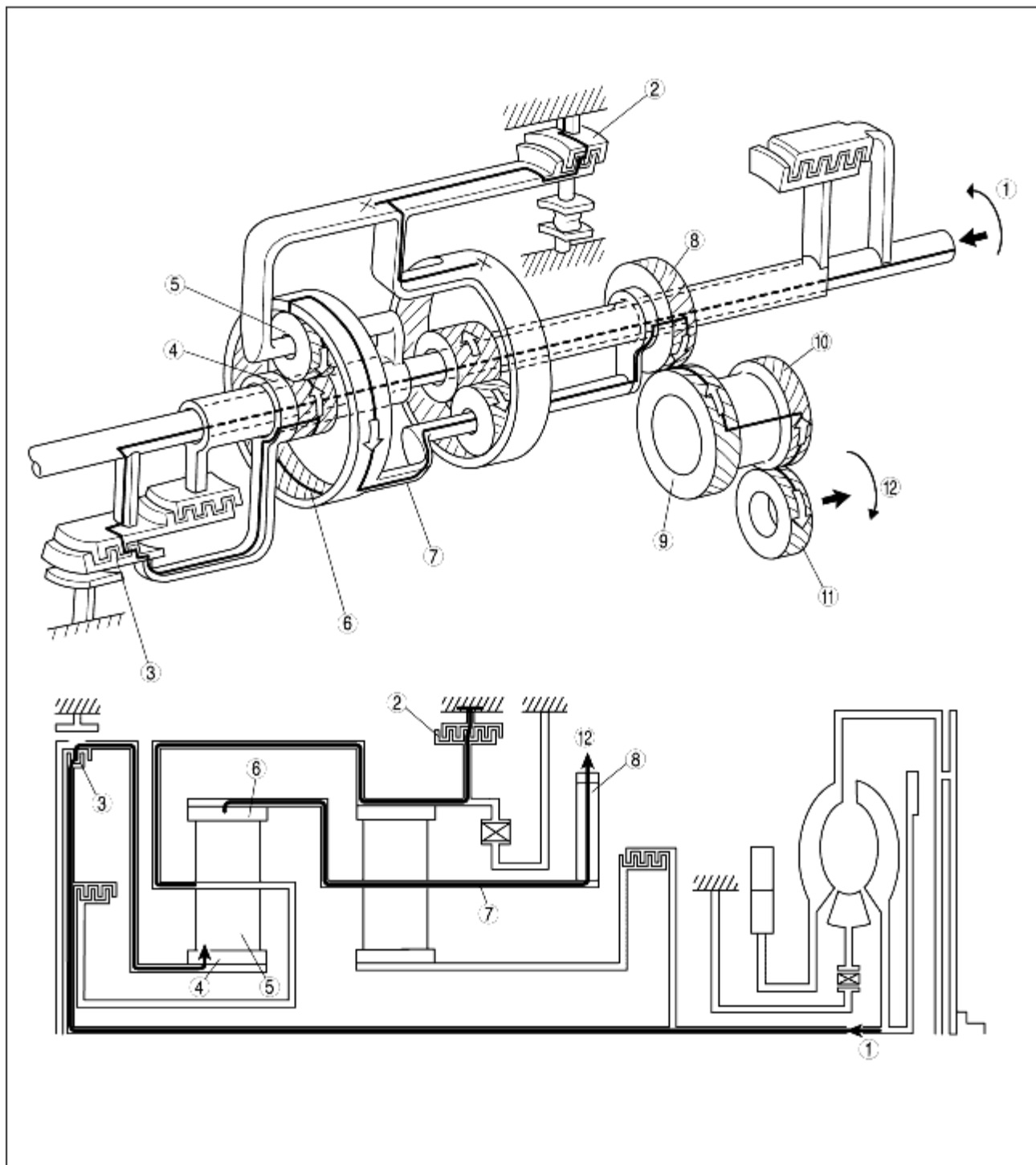


B3E05 17T009

1	Input
2	2-4 brake band
3	3-4 clutch
4	Rear sun gear
5	Rear pinion gear
6	Rear internal gear
7	Front planetary carrier
8	Primary gear



9	Secondary gear
10	Output gear
11	Ring gear (Differential)
12	Output

**R position**

B3E05 17T010

1	Input
---	-------

2	Low and reverse brake
3	Reverse clutch
4	Rear sun gear
5	Rear pinion gear
6	Rear internal gear
7	Front planetary carrier
8	Primary gear
9	Secondary gear
10	Output gear
11	Ring gear (Differential)
12	Output